



47 Marsham Street, Westminster
London SW1P

GARTONJONES.COM



47 Marsham Street, Westminster
London, SW1P

GARTON JONES.COM

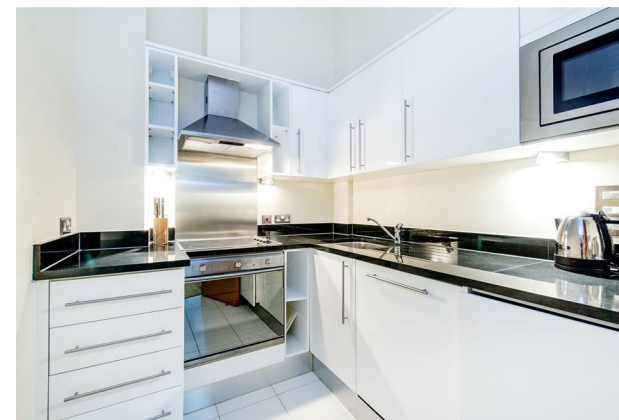
49 Marsham Street Lettings:
London +44 (0) 20 7340 0480
SW1P 3DP westminster@gartonjones.com
www.gartonjones.com

£550 Per Week

We are pleased offer for rent this 1 bedroom apartment located in this popular development in Westminster close to the River Thames. The property is offered for immediate occupation and measures at approximately 511sq.ft (47.4sq.m). The property offers high ceilings throughout with the living space comprising of a reception room, separate integrated kitchen, modern bathroom and double bedroom with fitted wardrobes. Residents of Romney House benefit from a 24 hour concierge and a gymnasium (*subject to opening hours*) and this property benefits from a secure allocated underground parking space (under separate negotiation). Marsham Street is extremely convenient for access to many of the renowned local landmarks which include the Houses of Parliament and Westminster Abbey. The local transport links of Victoria Station is nearby providing mainline UK services including the Gatwick Express as well as the underground services of Victoria, Pimlico, St James Park and Westminster. The area has an abundance of amenities and restaurants such as The Vincent Rooms, The Cinnamon Club, the Ivy Bar and Grill and Yaatra based in the Old Westminster Fire Station. Just a short walk away is the Chelsea College of Arts and St Johns Smith Square Concert Halls offering a variety of classical musical performances. Garton Jones are based on site so are readily available for viewings.

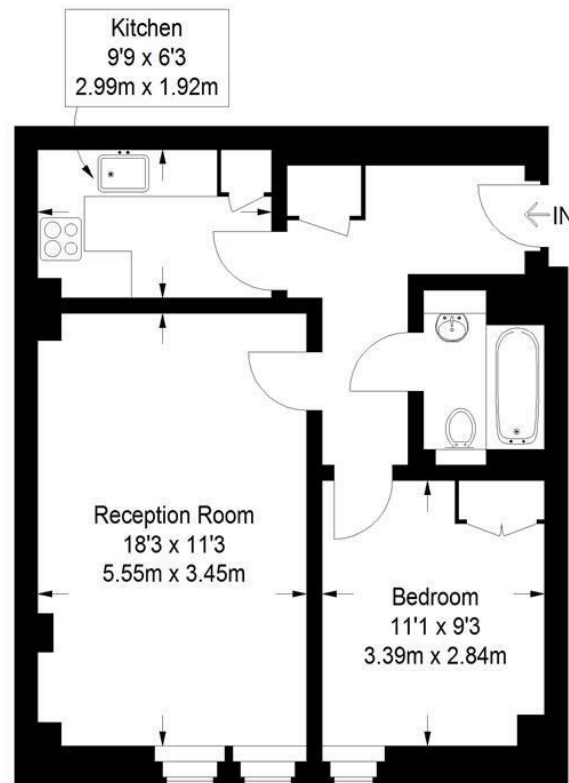
Security Deposit 5 weeks
Council Tax Band F (£ 1248.19 per annum)
Minimum Term 12 months

- 1 Bedroom Apartment
- 511sq.ft (47.4sq.m)
- Reception Room
- Separate Integrated Kitchen
- Bathroom
- Secure Underground Parking Available Under Separate Negotiation
- 24 Hour Concierge & Residents Gym with Sauna & Treatment Room
- Close To Local Shops & Restaurants
- Walking Distance To St James's Park, Westminster & Victoria Transport Links



Marsham Street

Approximate Gross Internal Area
511 sq ft / 47.4 sq m



Ground Floor

